

SIMRAD GD10P - IR GAS DETECTOR OPERATING MANUAL

P3359E

8th edition - November 2005



Designed for safety – Made for life

Simrad Optronics ASA – Kabelgaten 4B – P.O. Box 174, Økern –
NO-0509 OSLO, NORWAY

Phone +47 22 66 60 00 – Fax +47 22 66 60 01 [gassales@simrad-
optronics.no](mailto:gassales@simrad-optronics.no) - www.simrad-optronics.no

TABLE OF CONTENTS

1. PRODUCT DESCRIPTION.....	3
1.1 GENERAL DESCRIPTION	3
1.2 CONSTRUCTION	4
1.3 APPLICATION AREAS.....	4
1.4 TECHNICAL DATA (0-100% LEL METHANE, 5 SEC. RESPONSE TIME)5	
1.5 CERTIFICATION AND STANDARDS	7
1.6 CERTIFICATES.....	8
1.7 PRODUCT IDENTIFICATION LABEL.....	8
2. INSTALLATION.....	9
2.1 MOUNTING THE GD10P.....	9
2.1.1 Location	9
2.1.2 Ventilation duct or pipe mounting	9
2.1.3 Orientation.....	11
2.1.4 Mounting the GD10P.....	12
2.2 ELECTRICAL CONNECTIONS	12
2.2.1 Terminal compartment.....	12
2.2.2 Output cable connections	13
2.2.2.1 3-wire output cable connection.....	13
2.2.2.2 Retrofit mounting.....	14
2.2.2.3 Retrofit wiring	14
2.2.2.4 Recommended cable types.....	14
2.2.2.5 Initial wiring checks.....	15
3. OPERATION	16
3.1 START-UP PROCEDURE.....	16
4. MAINTENANCE.....	17
4.1 GENERAL.....	17
4.2 CLEANING OF OPTICAL WINDOW AND MIRROR	17
4.3 FUNCTION TEST	17
4.4 CALIBRATION TEST	18
4.5 FAILURE INDICATIONS	19
5. TECHNICAL DESCRIPTION	21
5.1 INTRODUCTION	21
5.2 THE GD10P CONCEPT	21
5.3 PERFORMANCE CHARACTERISTICS.....	23
5.3.1 Gas data.....	23
5.3.2 Cross interference to other gases	24

5.4	GAS DETECTION SYSTEM.....	24
6.	ORDERING INFORMATION.....	25
6.1	SPARE PARTS LIST	26

TABLE OF FIGURES

FIGURE 1.1	GD10P, OUTLINE DIMENSIONS (MM).....	7
FIGURE 1.2	IDENTIFICATION LABEL	8
FIGURE 2.1	VENTILATION DUCT OR PIPE MOUNTING USING DUCT MOUNTING FLANGE KIT REFER TO: FIGURE 2.2 FOR DETAILS.	10
FIGURE 2.2	EXPLODED VIEW, DUCT MOUNT FLANGE KIT.....	11
FIGURE 2.3	ORIENTATION OF GD10P WEATHER HOUSING IN RELATION TO FLOW DIRECTION	11
FIGURE 2.4	GD10P MOUNTED BY MEANS OF MOUNTING FEET.....	12
FIGURE 2.5	TERMINAL COMPARTMENT	13
FIGURE 2.6	BRIDGE INTERFACE INSTALLATION	14
FIGURE 3.1	SIGNAL OUTPUT DURING START-UP PERIOD.....	16
FIGURE 4.1	SET-UP OF FUNCTION TEST	18
FIGURE 4.2	SET-UP OF CALIBRATION TEST	19
FIGURE 4.3	TEST PROCEDURE	20
FIGURE 5.1	TRANSMITTANCE AS A FUNCTION OF WAVELENGTH	21
FIGURE 5.2	BLOCK DIAGRAM, GD10P.....	23

1. PRODUCT DESCRIPTION

1.1 General description

The Simrad GD10P Gas Detector is a point detector for gas concentration monitoring in potentially hazardous and/or poisonous environments. The GD10P is based on infrared absorption and uses the latest developments in analogue and microprocessor technology. Solid state design improves reliability, long-term stability and accuracy in continuous measurement of gas concentration in ambient air.

Compared with catalytic sensors, the GD10P has the following advantages:

Presence of oxygen is not required for correct measurement, which makes the GD10P suitable even in an inert gas atmosphere.
No possibility of poisoning of the detector since no chemical reaction occurs, i.e. silicon vapours and H_2S have no effect on the detector or the measurement.

The gas flow rate has no influence on accuracy.

There are no saturation effects which could lead to false measurements. Thus, the detector is capable of measuring gas concentrations up to 100% vol.

The detector has a continuous self-test function, and reports dirty optics and fault conditions to the control system.

Total system costs can be dramatically reduced with the GD10P:

High reliability results in low test frequency and no calibration costs.

Voting systems designed to reduce false alarms are not required, which reduces the number of detectors by up to 66 %.

1.2 Construction

A complete GD10P Gas Detector consists of the following:

An external gas measuring path where gas is measured by monitoring absorption of IR radiation. A weather protection enclosure is mounted around the measuring path to protect the optical surfaces from rain and dust and other contaminants.

An optoelectronic unit, which generates IR radiation to the gas measuring path, measures the reflected IR radiation from the gas measuring path and calculates the gas concentration. This unit is enclosed by an EExd certified housing.

A terminal compartment with cable entry and mini-terminals for electrical connection. The compartment is protected by a cover and is EExe certified.

1.3 Application areas

The GD10P is primarily designed for detection of hydrocarbon or CO₂ gases in hazardous areas on offshore platforms and petrochemical plants, but it can also be used in a variety of other applications.

For retrofit applications, a bridge interface is available allowing the detector to be connected directly to catalytic systems, using the existing cabling and control modules.

With the Sample Flow Housing mounted, the detector can be used in aspirator systems or process monitor and control systems.

The GD10P is housed in a compact stainless steel enclosure, which is certified flame-proof, meeting the requirements of EN 50018.

1.4 Technical data (0-100% LEL methane, 5 sec. response time)

Specification for other types on request

Detection range, standard	0-100% LEL (0-5% Vol.) methane
- Option	0-100% Vol. methane
- Option	Other gases on request
Long-term stability	Better than $\pm 5\%$ of full scale reading
Accuracy, standard 5 sec.	Better than $\pm 3\%$ of full scale between 0-50 % reading
	Better than $\pm 5\%$ of full scale between 50-100 % reading
Response time, standard 5 sec.	T20 = 1 sec. T50 = 2.5 sec. T90 = 6 sec.
Response time, option 1 sec.	T20 = 0.3 sec. T50 = 0.7 sec. T90 = 1.6 sec.
Start-up time	<60 sec., measuring 30 min, full specification
Self-test	Continuous
Calibration	Factory set
Sensor warnings:	
- Early clean optics	Dirt accumulation on windows (gas measurements interrupted by following signal: 1 mA for 3 sec. at 5 min. intervals)
- Clean optics	Dirt accumulation on windows (1 mA output signal)
- Sensor failure	Internal malfunction in the sensor (0 mA output signal)
Output signal:	
- Standard	Current source 4-20 mA, max. load impedance 500 Ω
- Option	Current sink 4-20 mA
Electrical:	
- Power supply	24 V DC
- Power consumption	Approx. 3.5 W
- Start-up current	0.3 A for 0.3 sec.

- Electrical connection	3 wires (M20 EExe cable gland)
Temperature range:	
- Storage	-40°C to +70°C
- Operating	-20°C to +45°C
- Operating (option)	-40°C to +60°C
- Humidity (operation)	99% RH non-condensing
Explosion-proof housing:	
- Main compartment	EExd IIC T6
- Terminal compartment	EExe
Protection category	IP66/IP67 DIN 40050
Housing material	Stainless steel SIS2343 (ASTM 316)
Weight, incl. Weather Protection	Approx. 2.9 kg
Accessories	Weather Protection Sample Flow Housing Duct Mounting Brackets

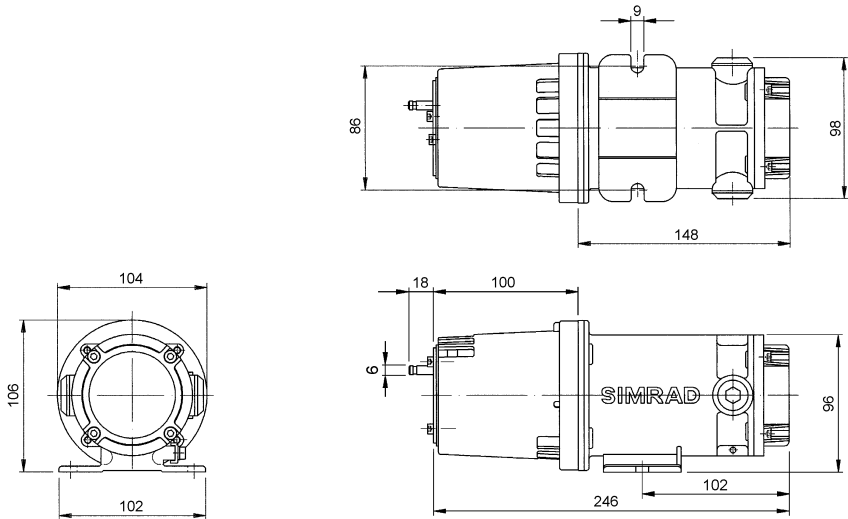


Figure 1.1 GD10P, outline dimensions (mm)

1.5 Certification and Standards

The GD10P has been certified according to:
Atex Directive 94/9/EC, EMC Directive 89/336/EEC Article 4 and
requirements laid down by the following standards:

EN50014/IEC 60079-0	Electrical apparatus for potentially explosive atmospheres. General requirements.
EN 50018/IEC 60079-1	Electrical apparatus for potentially explosive atmospheres. Flame-proof enclosure "d".
EN 50019/IEC 60079-7	Electrical apparatus for potentially explosive atmospheres. Increased safety "e".
EN 50054	Electrical apparatus for the detection and measurement of combustible gases. General requirements and test methods.
EN 50057	Performance requirements for Group II apparatus indicating up to 100 % lower explosive limit.
EN 61779-1/IEC 61779-1	Electrical apparatus for the detection and

	measurement of flammable gases. Part 1: General requirements and test methods.
EN 61779-4/IEC 61779-4	Electrical apparatus for the detection and measurement of flammable gases. Part 4: Performance requirements for Group II apparatus indicating a volume fraction up to 100 % lower explosive limit.
EN 50081-1	Electromagnetic compatibility – Generic emission standard. Part 1: Residential, commercial and light industry.
EN 50082-2	Electromagnetic compatibility – Generic immunity standard. Part 2: Industrial environment.

1.6 Certificates

- Atex Certificate: Nemko 01 ATEX 282
- SIMTARS, Australia
- ABS
- UL

1.7 Product identification label

The GD10P identification label is shown in the figure below. The composition of the label is in accordance with Atex Directive 94/9/EC.

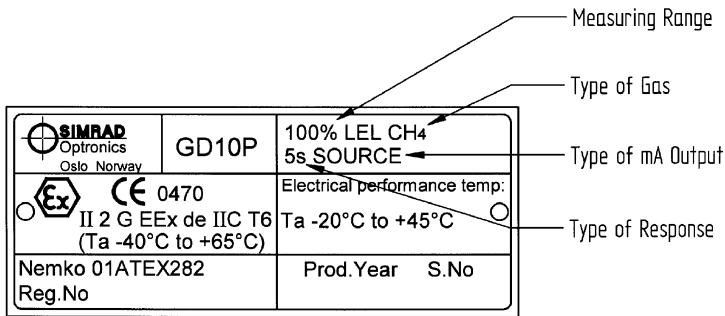


Figure 1.2 Identification label

2. INSTALLATION

2.1 Mounting the GD10P

2.1.1 Location

The detector must be mounted horizontally wired according to fig. 2.5.



NOTE: The area in which the detector may be mounted must be in accordance with the certification of the detector and in accordance with the standards of the appropriate authority in the country concerned.

Choice of mounting area:

- The detector should be mounted where gas leakage is most likely to occur. To detect methane, which is lighter than air, inside an enclosed area the detector should be mounted high in the area to be protected or immediately above potential leakage sites.
- To detect gases heavier than air, e.g. propane, the detector should be mounted below the potential leakage site.
- The detector should be mounted in a place where maintenance, i.e. cleaning of the optics, is easily performed.
- The detector may be mounted in areas where no oxygen is present.
- The detector may be mounted in areas with strong airflow
- The detector should NOT be mounted where it could be exposed to water drenching.



NOTE: The detector must always be used with the Weather Protection or Sample Flow Housing mounted. Exception to this must be discussed with Simrad Optronics.

2.1.2 Ventilation duct or pipe mounting

If installed in a ventilation duct or pipe, the mounting arrangement and accessories shown in Figure 2.1 and 2.2 should be used.

The Duct Mounting Bracket shown in Fig. 2.2 allows the GD10P to be positioned in the core of the airflow in wide ducts or pipes.



NOTE: Avoid direct light on lens and mirror if the GD10P is mounted without the Weather Protection.

In order to achieve minimum response time, the Weather Protection must be oriented with the flow direction indicator facing into the air flow. See procedure in section 2.1.3.

The sensor must be mounted in straight parts of the duct with undisturbed airflow. Avoid areas with possible turbulent flow e.g. immediately after sharp bends or junctions.

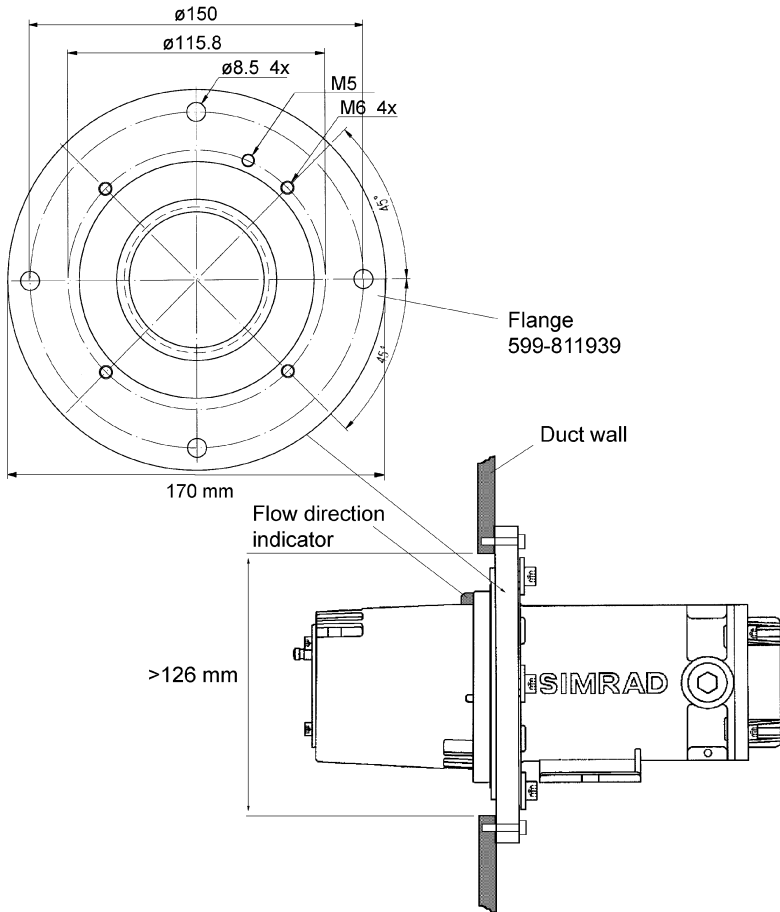


Figure 2.1 Ventilation duct or pipe mounting using Duct Mounting Flange Kit
Refer to: Figure 2.2 for details.

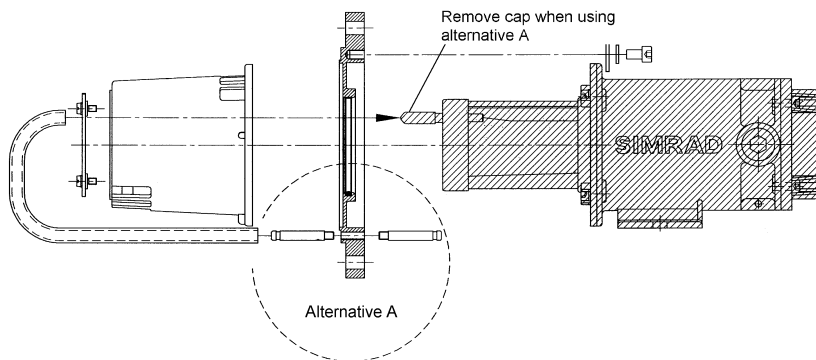


Figure 2.2 Exploded view, Duct Mount Flange Kit

2.1.3 Orientation

The detector should be mounted so that the longitudinal axis of the detector is horizontal. This will prevent accumulation of water and dust on the optics. The Weather Protection must always be oriented correctly for optimal performance.



NOTE: When the GD10P is mounted outdoors, the flow direction indicator must point upwards.

See “Flow Direction Indicator” in Fig. 2.3 below. Orientation of the Weather Protection is performed as follows:

- Use a screwdriver to loosen the two screws on the Weather Protection
- Rotate the Weather Protection to correct position
- Tighten the screw with a torque of max. 0.5 Nm

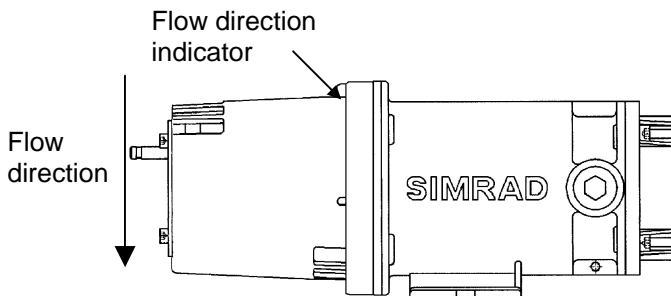


Figure 2.3 Orientation of GD10P weather housing in relation to flow direction

2.1.4 Mounting the GD10P

The detector is mounted by means of a projecting mounting leg using two M8 screws and washers, or by means of the Duct Mounting Flange Kit (4 x M8 screws).

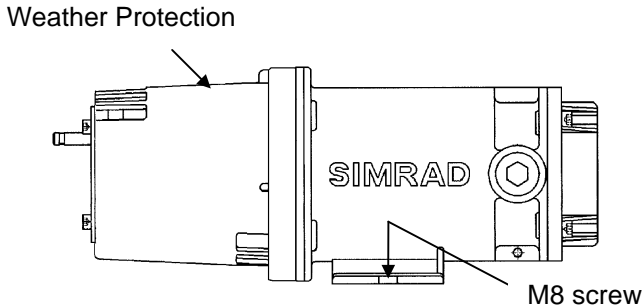


Figure 2.4 GD10P mounted by means of mounting feet

2.2 Electrical connections

2.2.1 Terminal compartment

The terminal compartment is accessible by removing the circular terminal cover. (Loosen the four M5 screws.) Refer to Figure 2.5.

The terminal compartment, including the 5 mini-terminals for electrical connection, is shown in Figure 2.5.

The installation wiring enters the terminal compartment via a single M20 EExe cable gland, which can be mounted on either side of the compartment. The unused entry is blanked with an EExe cover.

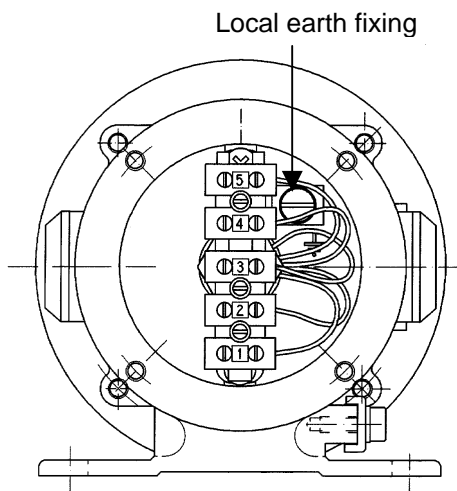


Figure 2.5 Terminal compartment

Terminal 1 +24 VDC
 Terminal 2 24 V return (0 V)
 Terminal 3 4-20 mA output

Terminal 4 Factory use only
 Terminal 5 Factory use only

2.2.2 Output cable connections

The detector has two output modes:

- Current source 4-20 mA (standard)
- Current sink 4 - 20 mA (option)

The mode is factory set, and shown on the identification plate of the detector.

2.2.2.1 3-wire output cable connection

The cable connections are as follows:

Terminal No 1: +24V DC
 Terminal No 2: 0 V DC (24 V and signal return)
 Terminal No 3: Signal output

The shield of the cable should be connected to instrument earth in the central control module, and left unterminated at the detector. Do not connect clean earth conductors to the local earthing screw.

2.2.2.2 Retrofit mounting

For retrofit of catalytic sensors an adapter plate is available allowing the GD10P to be mounted using the same hole pattern as most catalytic sensor junction boxes. Refer to section 6.0.

2.2.2.3 Retrofit wiring

The GD10P Gas Detector has been designed to be fully interchangeable with existing catalytic sensors, using the same 3-wire cable and the same bridge input control modules. This application requires the Bridge Interface to be employed as shown in Figure 2.6 below.

The Bridge Interface (Simrad reg. no. 109-804511.4) converts the standard 4 - 20 mA active current output from the GD10P to a bridge signal input, which is a typical standard for several control modules in use today. The Bridge Interface operates on a standard 24V DC supply. The complete Bridge Interface assembly is contained in a plastic housing, which clips onto a standard DIN mounting rail. This allows several channels to be interfaced in a space-saving way.



NOTE: As signal levels, polarity, loading, stability and fault testing differ between manufacturers of catalytic modules, Simrad Optronics must be contacted for correct setting of variables in the Bridge Interface.

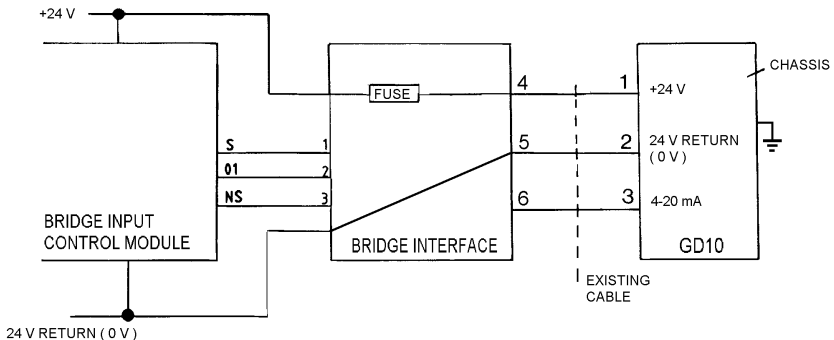


Figure 2.6 Bridge interface installation

2.2.2.4 Recommended cable types

The cable selected for interfacing the control equipment should be approved for use in the actual area.

It is recommended to use shielded cables.

Cables should be of a fine multi-strand type with a cross-section between 0.5 mm^2 and 1.5 mm^2 .

The cable enters the terminal compartment via an EExe cable gland. Several options of gland fittings are available.

2.2.2.5 Initial wiring checks

After wiring as detailed above, and before applying power, ensure that:

- +24V DC is connected to terminal 1
- 0 V DC is connected to terminal 2
- Signal output is connected to terminal 3

3. OPERATION

3.1 Start-up procedure

Ensure that system wiring and control system are in working order before switching on power to the detector.

The detector will then perform self-test and internal signal adjustments lasting for approx. 60 seconds and switch to measuring mode.

The output signal from the detector during this period is shown in Figure 3.1 below (current output of the GD10P standard version). Signal output before 60 seconds is 0 mA, and signal output after 60 seconds is 4 mA (if no gas is present).

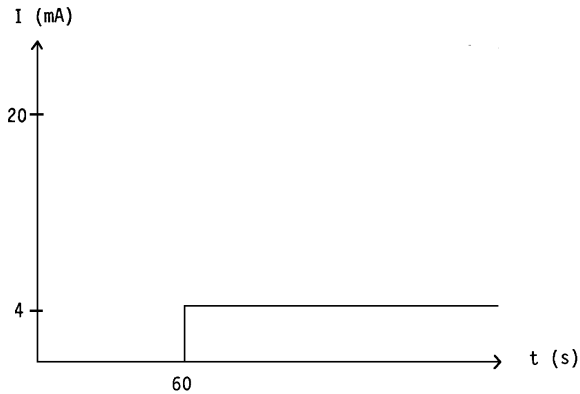


Figure 3.1 Signal output during start-up period

4. MAINTENANCE



NOTE: The GD10P has no user adjustable parts. It is not recommended to open the GD10P, as this will change the internal atmosphere, and the initial calibration could be affected.



NOTE: Opening the GD10P voids all warranty offered at time of sale.

4.1 General

The GD10P has been designed to require a minimum of maintenance. The only necessary maintenance is to inspect visually that the Weather Protection is not clogged in heavily contaminated areas.

4.2 Cleaning of optical window and mirror

If the optical window and mirror have to be cleaned, use a soft, clean tissue to rub off the contamination. The window and mirror are made of sapphire, which is highly resistant to scratching. Make sure that the whole optical surface is clean.



NOTE: For difficult contaminants the mirror and lens can be cleaned with an equal-part mixture of isopropyl alcohol and water. Do not perform any testing of the sensor before this solution has dried and residues have been wiped away

4.3 Function test

In order to perform function test of the detector, a test gas can be applied through a 6 mm test nozzle on the front of the Weather Protection housing. Read the effect on the sensor output signal or through the gas detection system.

The GD10P has been designed for long-term stability, and in order to retain the high reliability of the GD10P it is only necessary to monitor the detector's zero point and error messages from the detector. To avoid inhibiting the response time of the detector, the Weather Protection has been designed as open as possible to facilitate gas flow-through. Therefore, it is difficult to fill the gas measuring path completely with test gas, especially in windy weather.

A function test of the GD10P can be performed as follows:

- If there is no air movement, a test gas flow of minimum 4 litres/minute will give approximately the same value as the test gas.

- If there is an air movement of 0.5 m/sec., the test gas flow must be increased to 20 litres/minute to show the same value.
- At high air velocities, when it is difficult to obtain sufficient output using test gas in the LEL area, a test gas in the 50 - 100% vol. range can be employed. This gas can be applied at high flow for 2 - 5 seconds to acquire a concentration of test gas in the gas measuring path for a short period.

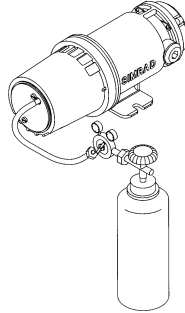


Figure 4.1 Set-up of function test

4.4 Calibration test



NOTE: A calibration test is not required to verify the correct function of the detector. Normal maintenance testing of the detector is covered by the simple function test in section 4.3. The following calibration test is only applicable if it is required by regulations or in cases where you need to verify system performance during commissioning or similar thorough testing.

- Remove the Weather Protection and replace it with the Sample Flow Housing. In order to perform calibration test, use a calibrated gas and apply it to the Sample Flow Housing (reg. no. 499-810874.8).
- Ensure that optical surfaces are clean before mounting the Sample Flow Housing.
- Apply a certified test gas of approx. 50 % of full scale methane as shown in Fig. 4.2 below.
- Gas flow should be approx. 1 litres/minute., wait approx. 2 min. to ensure that the Sample Flow Housing is completely filled with gas.
- Read sensor output or read output through the gas detection system.



NOTE: Use the same type of gas as the detector has been calibrated for.

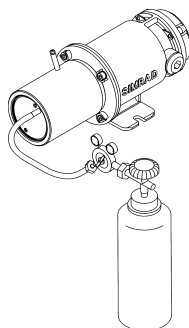


Figure 4.2 Set-up of calibration test

4.5 Failure indications

The internal microprocessor performs continuous self-testing of optical and electronic functions.

If a fatal error should occur in the electronics or optics, the processor will generate a 0 mA output signal, indicating sensor failure.

The detector should then be checked according to Figure 4.3 on the next page. Do not return the instrument to Simrad Optronics for repair if this test has not been performed.

If the IR energy in the optical path is reduced to 50-70% of its original value, the output signal will go down to 1mA for 3 seconds at 5 minutes interval.

If the IR energy is further reduced, the output signal will go down to 1mA. In this condition the detector will not detect gas.

If the optics are contaminated, wipe the optics with a clean cloth and mild detergent according to instructions in para. 4.2. The optics must be cleaned even if they appear not to be contaminated.



NOTE: Avoid direct light on lens and mirror if testing without the Weather Protection.



NOTE: Ensure that no gas is present in the measuring chamber when testing.

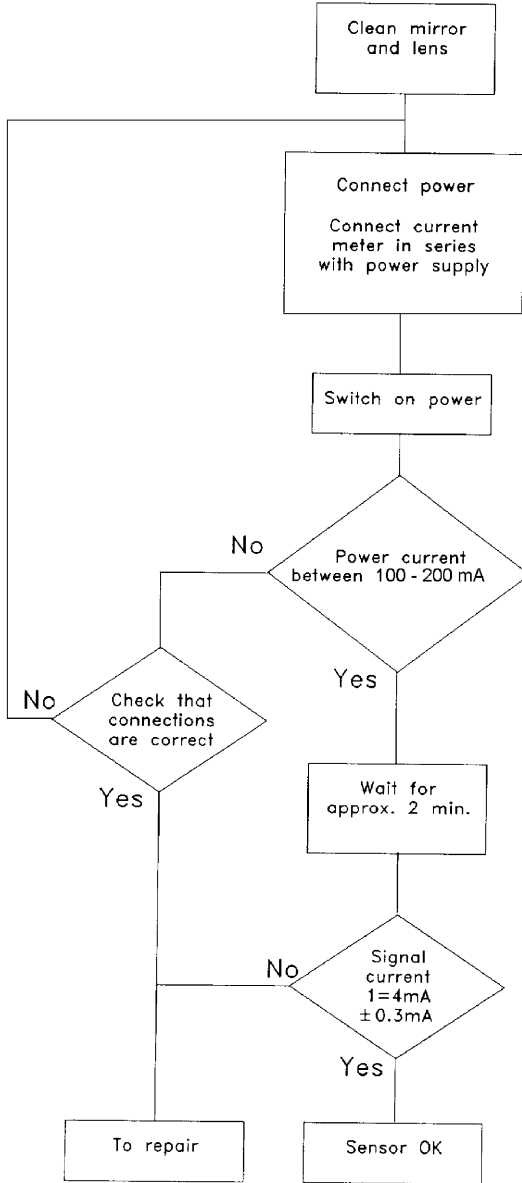


Figure 4.3 Test procedure

5. TECHNICAL DESCRIPTION

5.1 Introduction

The GD10P Gas Detector from Simrad Optronics is a point detector for use in hazardous areas. A high-stability, solid-state infrared radiation source combined with the latest developments in optical and electronic design have led to the realisation of a compact, accurate and cost-effective instrument able to monitor explosion dangers in real-world environments.

5.2 The GD10P concept

The concept is based on measurement of infrared radiation passing through a volume of gas. The GD10P employs a dual beam, dual wavelength measuring principle with separate optical detectors for maximum stability and reliability.

Since different types of gas have unique absorption spectra, they can easily be identified by proper selection of an infrared wavelength at which absorption is measured. Radiation at another wavelength measures the overall transmission through the optical system and the air volume. By comparing the transmission at the two wavelengths, the gas concentration in the air is determined. Having chosen a wavelength which is characteristic of one type of gas, other types of gas will not cause false alarms.

Using a solid-state IR source instead of a lamp ensures high reliability and long-term stability with no regular maintenance or calibration required during equipment lifetime.

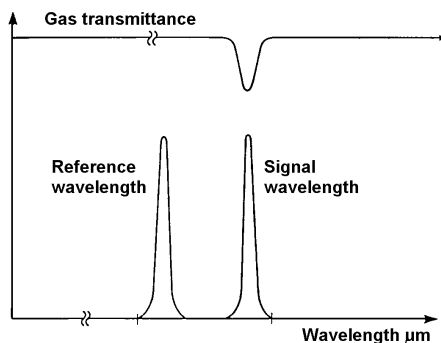


Figure 5.1 Transmittance as a function of wavelength

Refer to Figure 5.2 below.

Radiation from two infrared sources passes through two narrowband filters selecting a measuring wavelength and a reference wavelength. The sources are electronically chopped. Radiation is divided by a beamsplitter into an internal and external path. The internal path is viewed by the compensation detector, and the external path is viewed by the measuring (main) detector. The compensation detector monitors and compensates for drift in sources or detectors. The main detector monitors the external measuring path and detects whether the selected gas is present.

The four signals, two from the compensation detector and two from the main detector, are amplified, digitised and fed to the microprocessor. The signals are used by the microprocessor to calculate the gas concentration. The gas response is then linearized and presented as either a voltage, a current or a digital output signal. Internal signals are compared with test limits to monitor electronics and optical parts. If values outside the test limits are found, specific error messages are given.

Optical filter characteristics remain constant over time, and drift in the other components is monitored and compensated by the dual wavelength, dual path concept. This means that the zero and gas span factory calibration will remain stable regardless of component drift, and that the detector needs no manual recalibration after factory calibration.

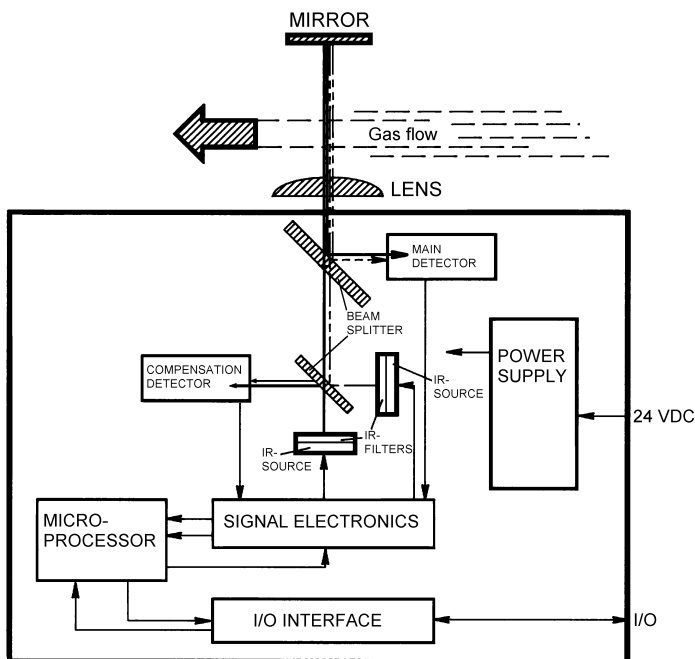


Figure 5.2 Block diagram, GD10P

5.3 Performance characteristics

5.3.1 Gas data

The GD10P standard version is factory calibrated and linearized with methane gas in the 0-100 % LEL range. Calibration/linearization to other gases or concentrations can also be done.

Accurate measurements can only be achieved by having the detector calibrated for the gas it is intended to measure.

Gases such as ethane, propane and butane are also detected by the GD10P. A GD10P calibrated for methane has a higher sensitivity to these gases than to methane. This means that explosion danger from other HC-gases will always be detected by the GD10P.

Because of tolerances in the infrared filters, readings of other gases than methane will not be exact when the detector is calibrated to 100% LEL methane.

Converting % LEL to % v/v is based on ISO10156, Second edition 1996-02-15: "Gases and gas mixtures - Determination of fire potential and oxidizing ability for the selection of cylinder valve outlets".

The GD10P is designed for normal atmosphere pressure variation, but it is certified for pressure limits from 86 to 108 kPa.

5.3.2 Cross interference to other gases

Hydrocarbon gases such as methane, ethane, propane and butane are absorbing at a signal wavelength of 3.3 μm . These gases do not interfere at the reference wavelength at 3.0 μm . If the atmosphere to be monitored contains gases such as acetylene that absorb at the reference wavelength of 3.0 μm , misleading measurements may be obtained depending on the interfering gas concentration. In such cases, contact Simrad Optronics for information. A modified GD10P using another reference wavelength will eliminate these problems.

Water vapour, carbon dioxide, oxygen, nitrogen and other gases, which are present in normal air will not influence the measurements.


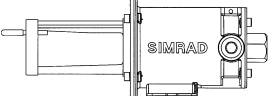

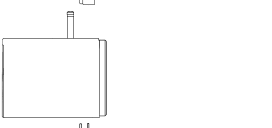
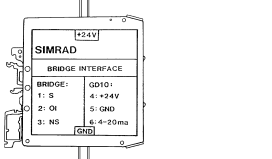
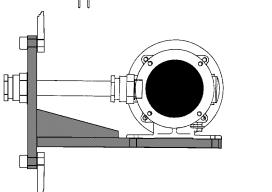

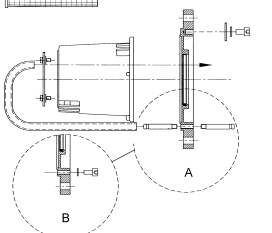
5.4 Gas detection system

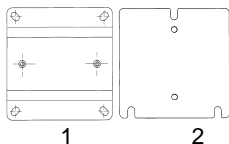
Since the GD10P is a point detector, it must be mounted where gas leakage is most likely to occur. It should be considered whether the gas in question is heavier or lighter than air. The number of sensors recommended depends on room size, shape, airflow and so on. The GD10P can also be mounted on or through an air duct wall. For this purpose, duct mounting kits are available.

Due to high reliability and extensive self-testing, the GD10P dramatically reduces the number of sensors needed, and voting between sensors is no longer necessary. As a result, maintenance routines can be relaxed without losing system confidence and repair work is reduced to a minimum.

For detailed mounting descriptions, see section 2.1

6. ORDERING INFORMATION

	Description	Part Number
	GD10P 0-100 % LEL Methane 5 sec. source Other standard and special versions available on request	128-810867
	GD10P-UL 100 % LEL Methane 5 sec. source	128-813367
	Weather Protection Kit GD10P	499-810913
	Housing Sample Flow Assy	499-810874
	Bridge Interface Assy	109-804511
	Duct Mounting Bracket	599-811086
	Mosquito Set Assy	499-813397
	Duct Mounting Flange Kit GD10P	499-811938



1: Plate Adapter (junction
box/GD10P)
2: Plate Adapter
(GD10P0/GD10P)

499-811176

599-811547

6.1 Spare Parts List

Designation	Simrad Part Number
Weather Protection Kit GD10P	499-810913
Cap, Slip-on	599-904176
Cover Assy	499-810869

